

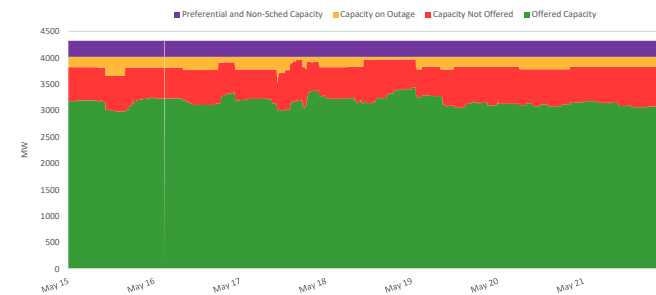
## PEMC MARKET ASSESSMENT HIGHLIGHTS

- The average demand and the reserve schedule, recorded at 1,982 MW during the week of 15 - 21 May 2023, was lower than the previous week at 2,074 MW.
  - The average effective supply during the week was 2,186 MW, lower than the 2,256 MW of the previous week. Ramping limitations were considered in the calculation of the effective supply.
    - The capacity on outage averaged at 193 MW, lower than last week's 220 MW. About 61% of the 193 MW involved Coal plants, while in terms of category, about 73% were Forced Outages.
  - As a result, an average supply margin of 204 MW was observed during the week, which is higher by about 12% relative to the previous week. The thinnest supply margin was 47.64 MW on 15 May 2023 10:30. The average supply margin was 182.82 MW at peak intervals and 221.64 MW at off-peak intervals.
  - Correspondingly, average GWAP was recorded at PHP 3,807/MWh from PHP 7,184/MWh last week. Administered Price was used in the MO initiated market intervention on 16 May 2023 for interval 02:55 due to non generation of RTD schedules by the MMS.
    - No secondary price cap was imposed for this week
  - The top 5 participant groups accounted for about 75% of the offered capacity. The Herfindahl-Hirschman Index (HHI) by participant group indicated moderately concentrated market based on the offered and registered capacities.
  - The top 5 pivotal plants during the week were –
    - GN POWER KAUSWAGAN CFTPP (about 64.34% of the time)
    - MINDANAO CFTPP (about 48.76% of the time)
    - SARANGANI CFTPP (about 41.52% of the time)
    - MALITA CFTPP (about 36.31% of the time)
    - THERMA SOUTH CFTPP (about 27.68% of the time)
  - Based on the MMS Solution, the top 5 congested equipment during the week were –
    - Aurora Transmission Corridor (about 1.3% of the time)
    - 138kV Balo\_Aurora Line1 (about 0.25% of the time)
  - Coal plants recorded slightly higher maximum offer capacity following the synchronization of FDC Misamis CFTPP Unit 2 (135MW) which later went on outage again at the latter part of the week. On the other hand, hydro plants recorded higher offered capacity due to less deration.
- ITEMOP MARKET SYSTEMS ADVISORY
- Market Intervention was initiated by Market Operator on 16 May 2023 for interval 02:55 due to non generation of RTD schedules by the MMS.

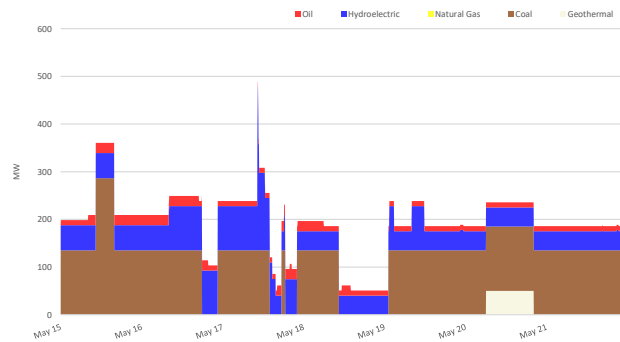
## SUMMARY (PRICE, SUPPLY, DEMAND AND RESERVE SCHEDULE)

Particulars		15 - 21 May 2023	Previous Week (08 - 14 May 2023)	Percent Change
GWAP (PHP/MWh)	max	31,874.48	31,455.55	1.33%
	min	-0.01	0.00	-
	ave	3,806.77	7,184.00	-47.01%
Effective Supply (MW)	max	2,629.08	2,668.15	-1.46%
	min	1,803.80	1,849.53	-2.47%
	ave	2,186.19	2,256.21	-3.10%
System Demand (MW)	max	2,392.95	2,427.66	-1.43%
	min	1,432.73	1,528.62	-6.27%
	ave	1,869.02	1,963.28	-4.80%
Demand + Reserve Schedule (MW)	max	2,472.95	2,532.66	-2.36%
	min	1,565.23	1,643.62	-4.77%
	ave	1,981.65	2,073.89	-4.45%
Supply Margin (MW)	max	308.26	261.53	17.87%
	min	47.64	45.20	5.39%
	ave	204.43	182.32	12.13%

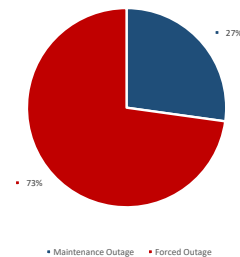
## CAPACITY PROFILE



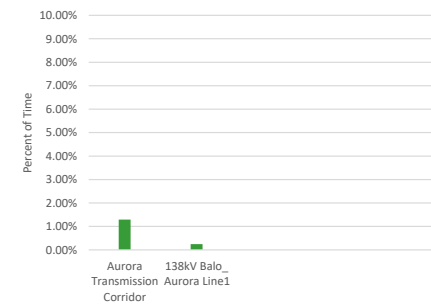
## CAPACITY ON OUTAGE BY PLANT TYPE



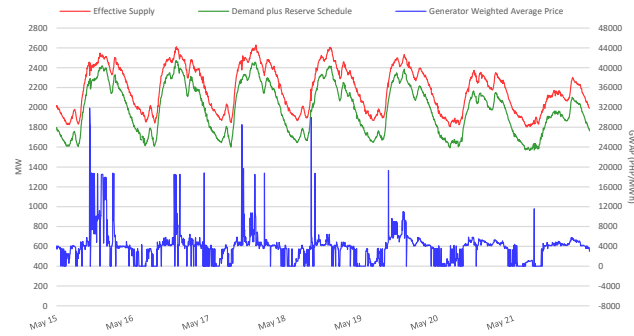
## CAPACITY ON OUTAGE BY OUTAGE CATEGORY



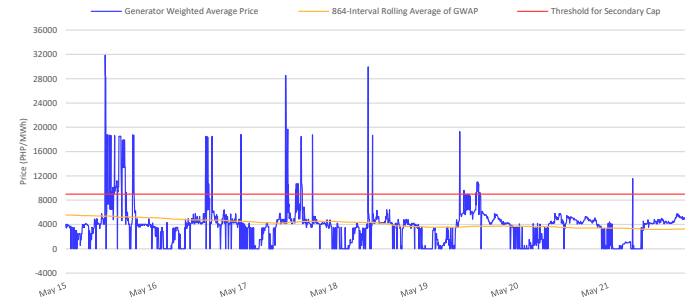
## RTD CONGESTION



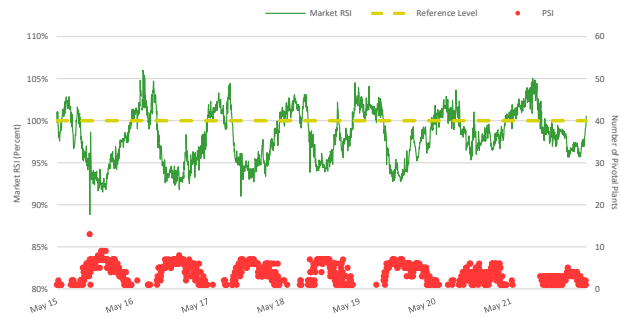
## SUPPLY, DEMAND AND PRICE



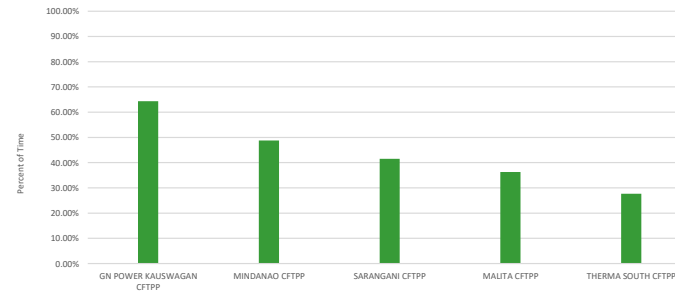
## GENERATOR WEIGHTED AVERAGE PRICE



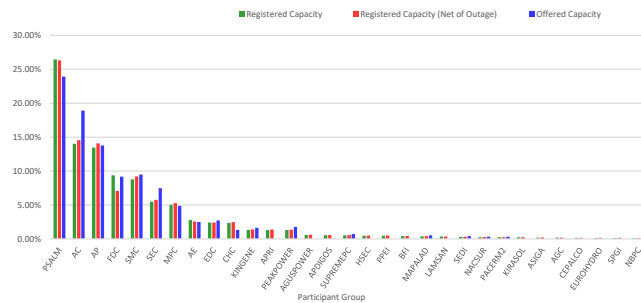
## MARKET RSI VS PIVOTAL PLANTS



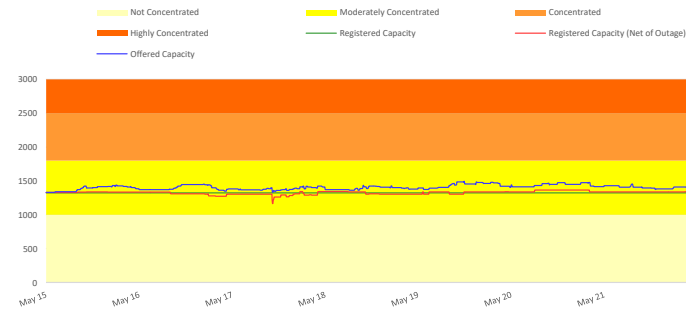
## PSI



## MARKET SHARE



## HERFINDAHL-HIRSCHMAN INDEX

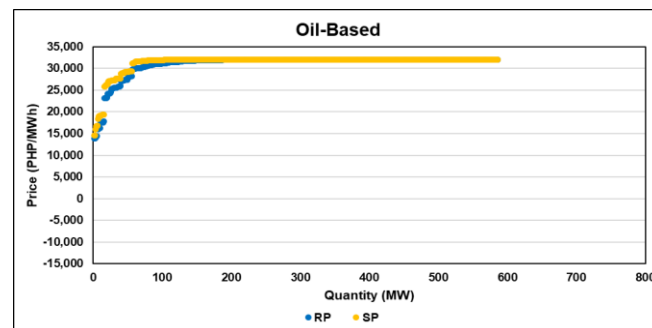
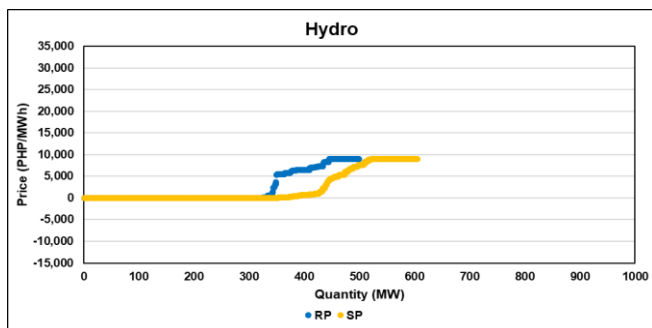
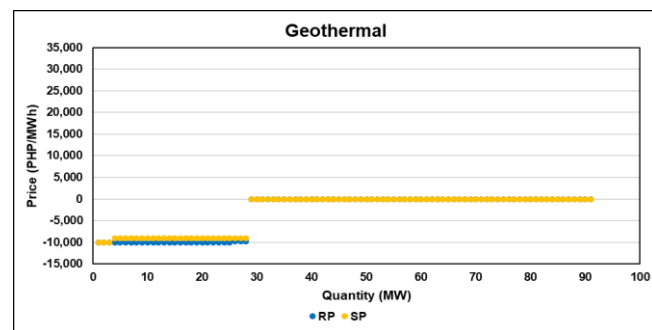
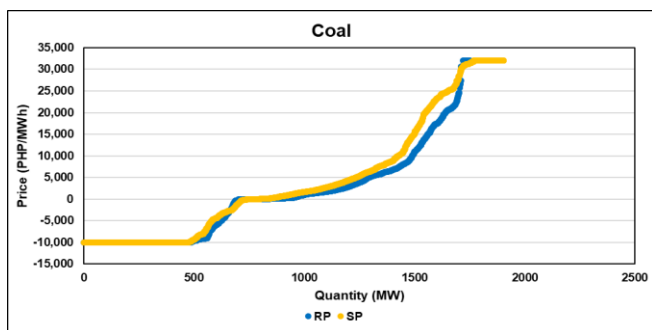


## OFFER PATTERN ANALYSIS

### Legend

RP: Reference Offer Price – the week of 08-14 May 2023 was used as a control for the comparison with the subject price

SP: Subject Offer Price – the week of 15-21 May 2023



**GLOSSARY OF TERMS**

**EFFECTIVE SUPPLY** - The effective supply is equal to the offered capacity of all scheduled generator resources, nominated loading level of non-scheduled generating units and projected output of preferential dispatch generating units, adjusted for any security limit provided by the System Operator and other constraints considered during MMS simulation such as generator offered ramp rates. Scheduled output of plants on testing and commissioning through the imposition of security limit by SO and scheduled output of Malaya plant when it is called to run as Must Run Unit (MRU) are likewise accounted for in the effective supply.

**MARKET RESIDUAL SUPPLY INDEX (Market RSI)** - The RSI is a dynamic continuous index measured as ratio of the available generation without a generator to the total generation required to supply the demand. The RSI is measured for each generator. The greater the RSI of a generator, the less will be its potential ability to exercise market power and manipulate prices, as there will be sufficient capacity from the other generators. In contrary, the lower the RSI, the greater the market power of a generator (and its potential benefit of exercising market power), as the market is strongly dependent on its availability to be able to fully supply the demand. In particular, a RSI greater than 100% for a generator means that the remaining generators can cover the demand, and in principle that generator cannot manipulate market price. On the other hand, a RSI less than 100% means that the generator is pivotal in supplying the demand.

The RSI for the whole market (Market RSI) is measured as the lowest RSI among all the generators in the market. A Market RSI less than 100% indicates the presence of pivotal generator/s.

**MARKET SHARE** - The fraction of the total capacity or energy that a company or related group owns or controls in the market.

**MAJOR PARTICIPANT GROUP** - The grouping of generators by ownership or control.

**PIVOTAL SUPPLIER INDEX (PSI)** - The pivotal supplier index is a binary variable (1 for pivotal and 0 for not pivotal) for each generator. The index identifies whether a generator is pivotal in supplying the demand. The PSI is calculated as the percentage of time that a generator is pivotal in a period (i.e. monthly).

**HERFINDAHL-HIRSCHMAN INDEX (HHI)** - is a commonly accepted measure of market concentration that takes into account the relative size and distribution of participants in the market. The HHI is a number between 0 and 10,000, which is calculated as the sum of squares of the participant's market share. The HHI approaches zero when the market has very large number of participants with each having a relatively small market share. In contrary, the HHI increases as the number of participants in the market decreases, and the disparity in the market shares among the participants increases. The following are the widely used HHI screening numbers: (1) less than 1,000 - not concentrated; (2) 1,000 to 1,800 - moderately concentrated; (3) greater than 1,800 - concentrated; and (4) greater than 2,500 - highly concentrated.

**REGISTERED CAPACITY** - The capacity registered by a generator with WESM.

**REGISTERED CAPACITY (NET OF OUTAGE)** - The capacity registered by a generator with WESM less capacity on outage.

**OFFERED CAPACITY** - The offer to supply electricity submitted by a generator.

DISCLAIMER: The information contained in this document is based on the available electricity spot market data. The same information is subject to change as updated figures come in. As such, the PEMC does not make any representation or warranty as to the completeness of this information. The PEMC likewise accepts no responsibility or liability whatsoever for any loss or cost incurred by a reader arising from, or in relation to, any conclusion or assumption derived from the information found herein.