



Philippine Electricity
Market Corporation

MONTHLY FORECAST ACCURACY STANDARDS RESULT

March 2024 FAS Result

26 June 2024 | MS Teams

REQUESTED ACTION

FOR INFORMATION

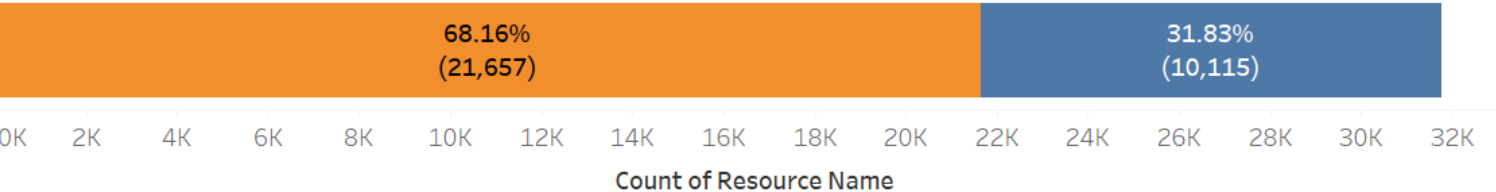
SUMMARY OF WESM REGISTRATION ON MUST DISPATCH GENERATING UNITS

Technology	No. of Resources in Luzon	No. of Resources in Visayas	No. of Resources in Mindanao	Total
Run of River	18	3	14	35
Solar	37	11	5	53
Wind	5	2	0	7
Total	60	16	19	95

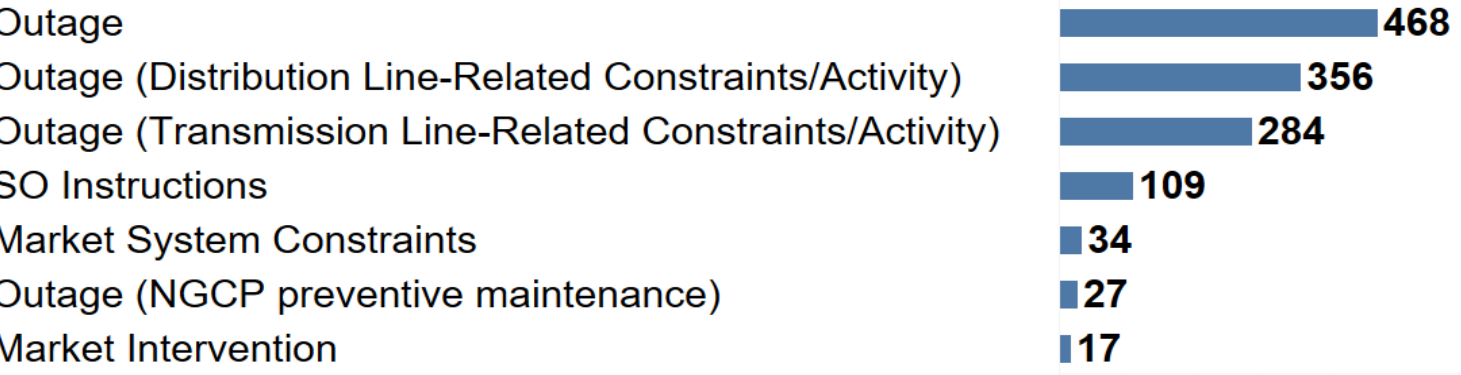
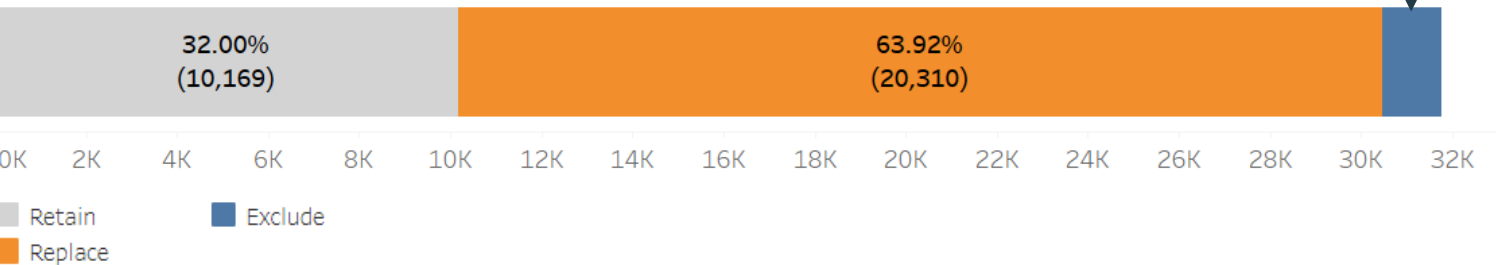
- As of March 2024, there are **105** facilities registered as MDGU in the WESM. From the registered facilities, **95** facilities from Luzon, Visayas, and Mindanao regions are being monitored, **10** facilities are under test and commissioning.

TOTAL INTERVALS WITH REQUESTED ACTION & ECO ASSESSMENT – MARCH 2024

Requested Actions by Billing Month

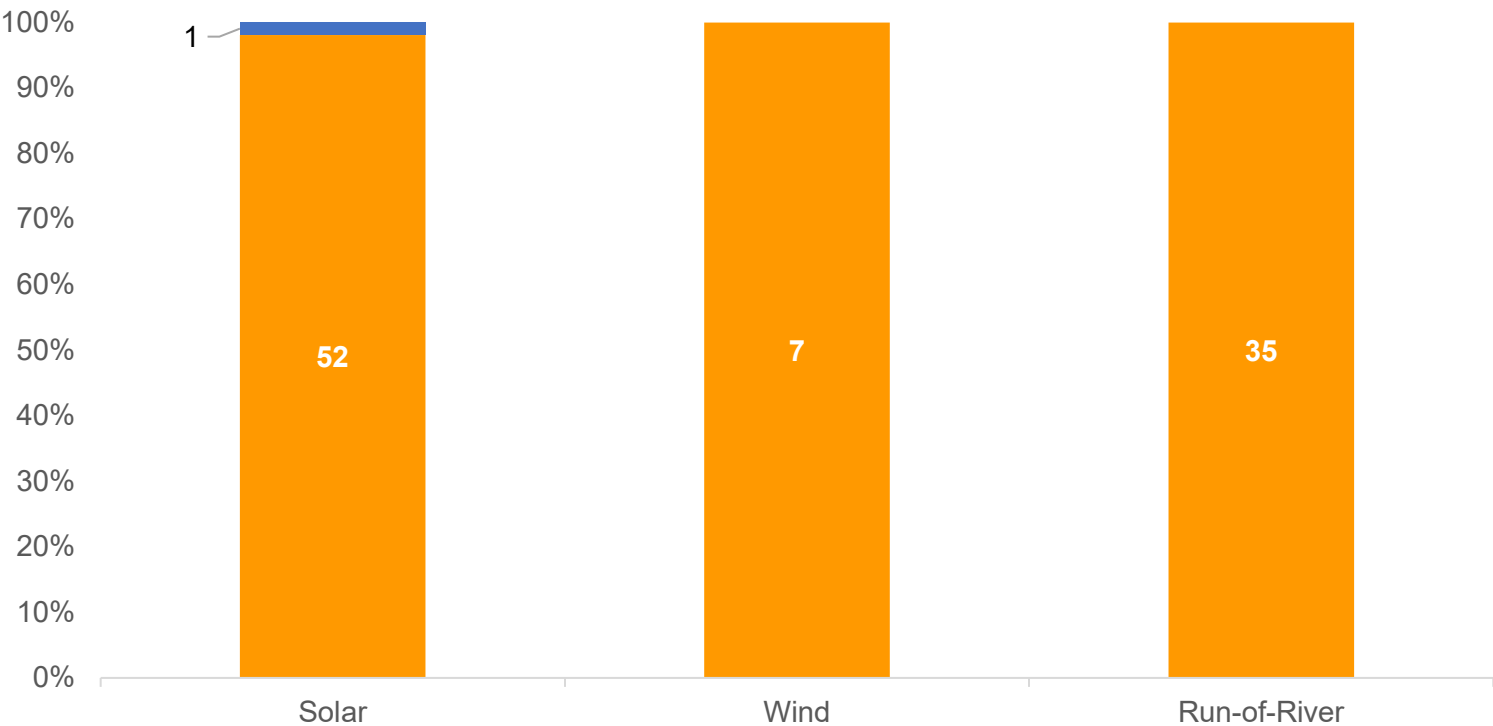
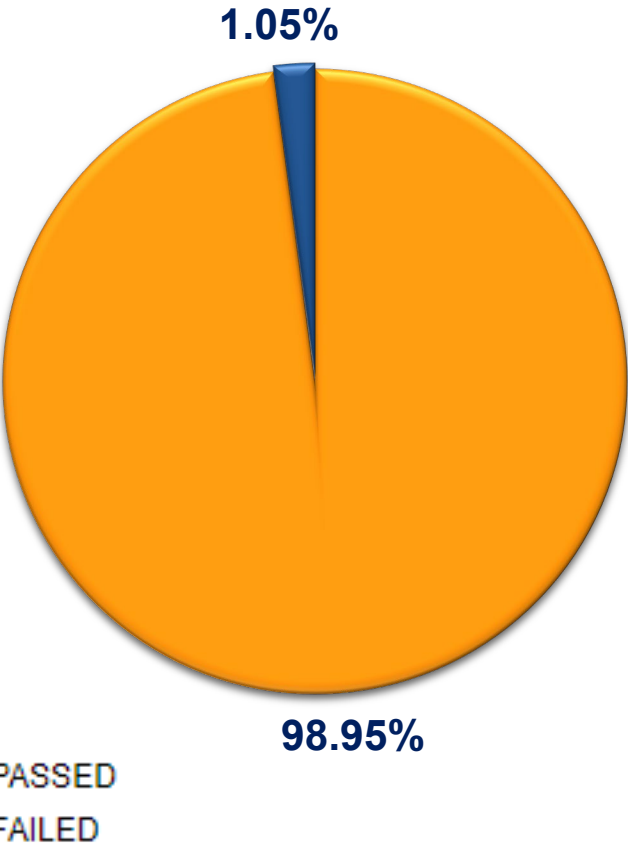
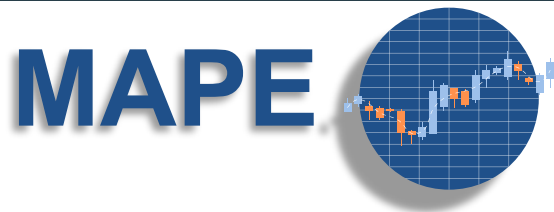


ECO Assessment by Billing Month



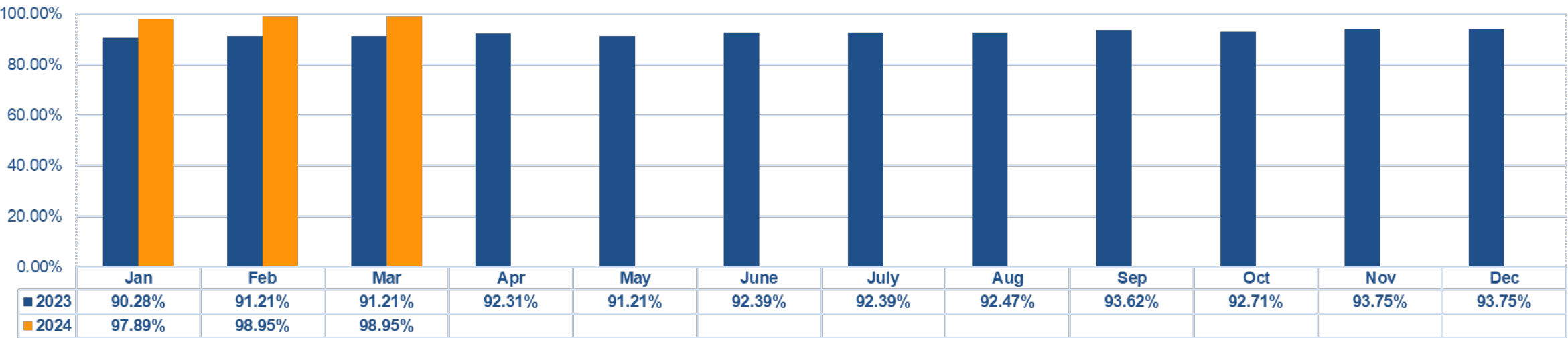
- ECO received **21,657** intervals requesting replacement due to possible Data Variance and **10,115** intervals requesting exclusion. The total intervals with requested action is **31,772**.
- There are a total of **10,172** intervals with retained result based on ECO assessment.
- Out of **21,657** intervals requesting data replacement, **20,307** intervals were confirmed to be Data Variance (**93.77%** of the intervals for replacement).
- Out of **10,115** intervals requesting exclusion, the ECO accepts **1,295** intervals (**12.80%** of the total intervals for exclusion).

MARCH 2024 FINAL FAS REPORT (OVERALL PASSING RATE)



- 94 out of 95 facilities being monitored performed within the MAPE standards while 1 failed.
- 52 out of 53 Solar Power Plants, 7 out of 7 Wind Power Plants passed the MAPE standards, and 35 out of 35 Run-of-River Power Plants.

MAPE PASSING RATE AS OF MARCH 2024 (OVERALL)



Total MDGUs Monitored

2023	72	91	91	91	91	92	92	93	94	96	96	96
2024	95	95	95									

Total Facilities Passed the MAPE

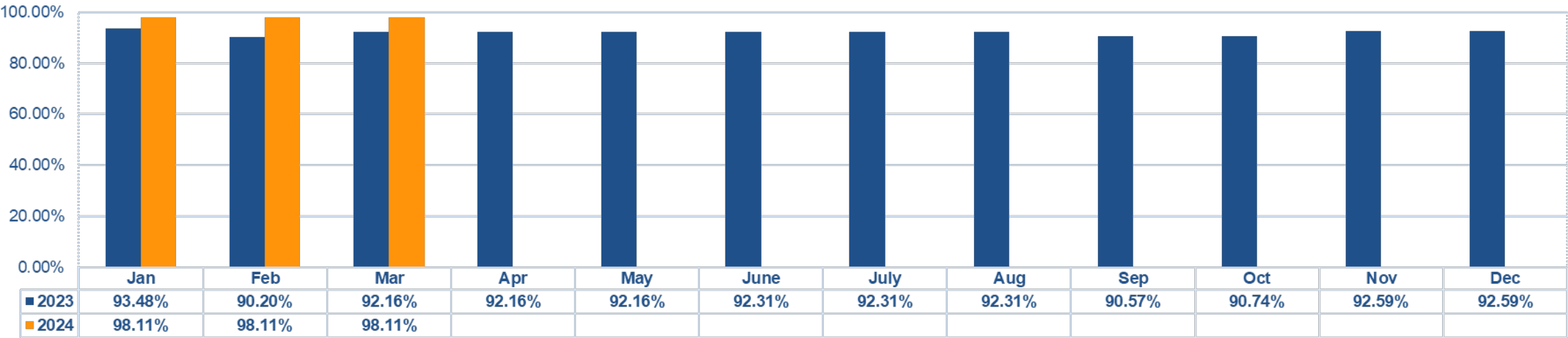
2023	65	83	83	84	83	85	85	86	88	89	90	90
2024	93	94	94									

Total Facilities Failed the MAPE

2023	7	8	8	7	8	7	7	7	6	7	6	6
2024	2	1	1									

- The March 2024 passing rate maintained at 98.95% and is better than March 2023 passing rate.

MAPE PASSING RATE AS OF MARCH 2024 (SOLAR)



Total MDGUs Monitored

2023	46	51	51	51	51	52	52	52	53	54	54	54
2024	53	53	53									

Total Facilities Passed the MAPE

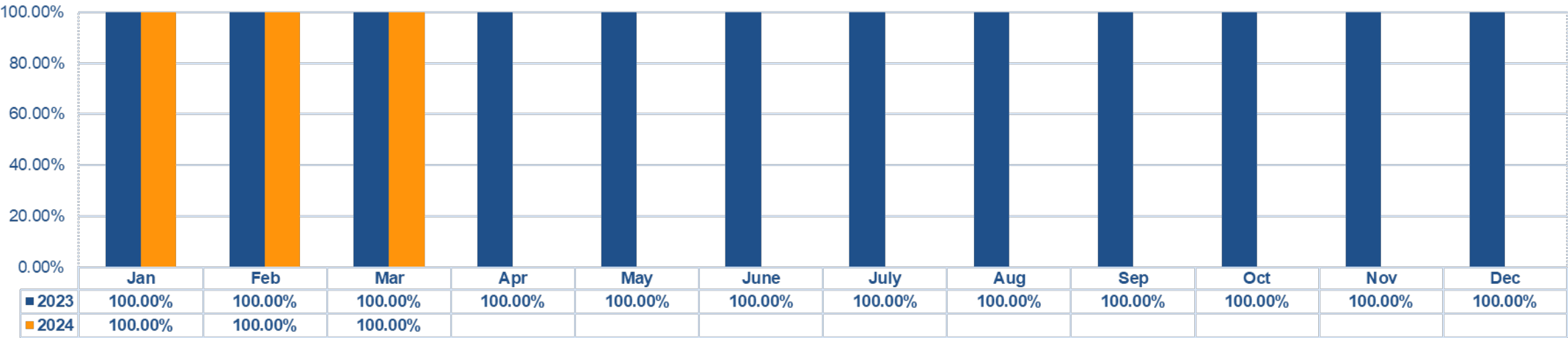
2023	43	46	47	47	47	48	48	48	48	49	50	50
2024	52	52	52									

Total Facilities Failed the MAPE

2023	3	5	4	5	5	5	5	5	7	7	7	8
2024	1	1	1									

- The 2024 passing rates are consistent at 98.11%, and higher than 2023 passing rates.

MAPE PASSING RATE AS OF MARCH 2024 (WIND)



Total MDGUs Monitored

2023	7	7	7	7	7	7	7	7	7	7	7	7
2024	7	7	7									

Total Facilities Passed the MAPE

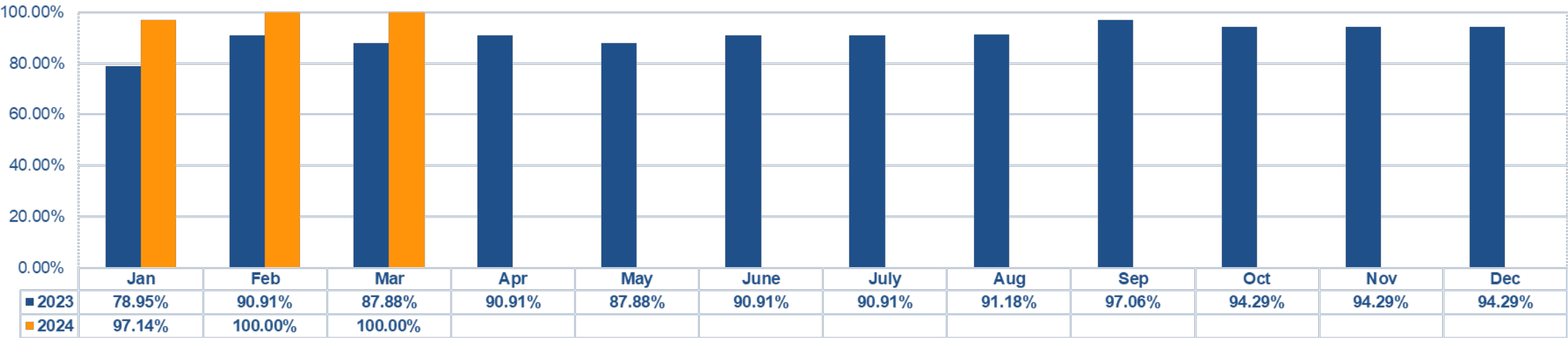
2023	7	7	7	7	7	7	7	7	7	7	7	7
2024	7	7	7									

Total Facilities Failed the MAPE

2023	0	0	0	0	0	0	0	0	0	0	0	0
2024	0	0	0									

- Wind facilities showed perfect performance since 2023.

MAPE PASSING RATE AS OF MARCH 2024 (RUN-OF-RIVER)



Total MDGUs Monitored

2023	19	33	33	33	33	33	33	34	34	35	35	35
2024	35	35	35									

Total Facilities Passed the MAPE

2023	15	30	29	30	29	30	30	31	33	33	33	33
2024	34	35	35									

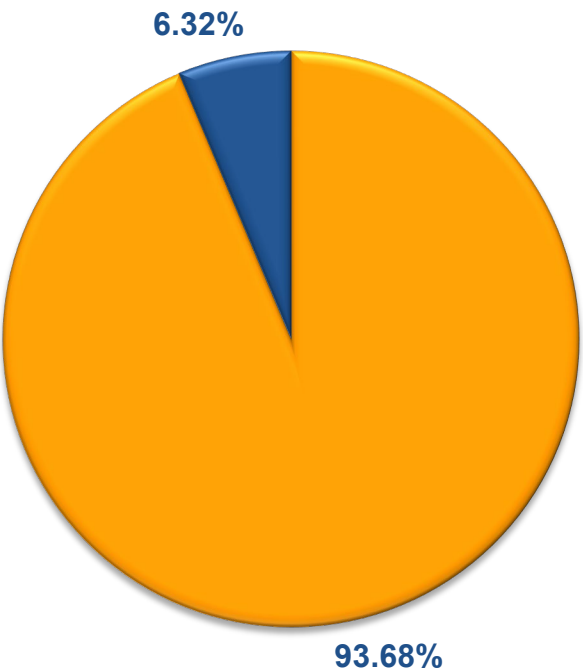
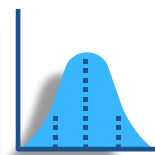
Total Facilities Failed the MAPE

2023	4	3	4	3	4	3	3	3	1	2	2	2
2024	1	0	0									

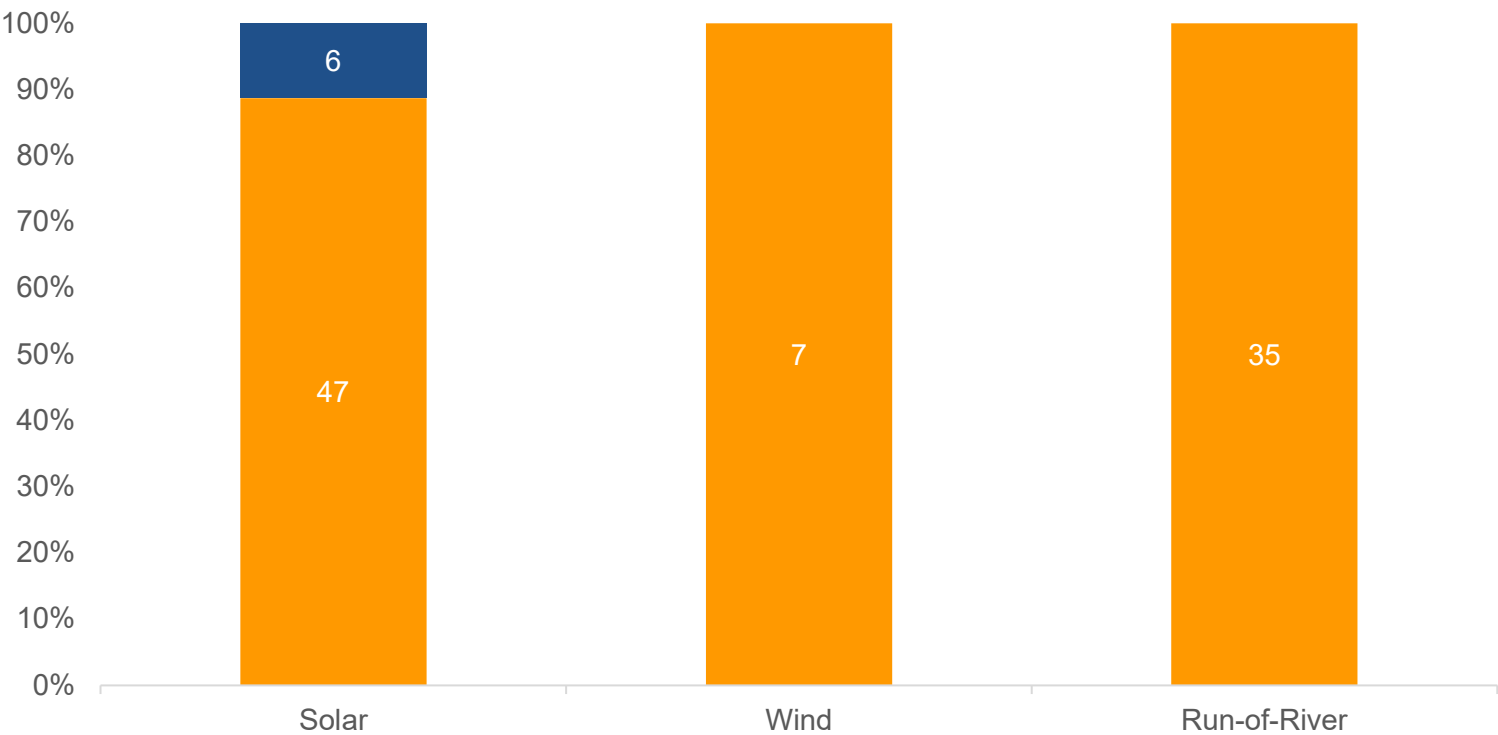
- Run-of-River 2024 showed improved performance as compared to 2023 performance.

MARCH 2024 FINAL FAS REPORT (OVERALL PASSING RATE)

PERC95

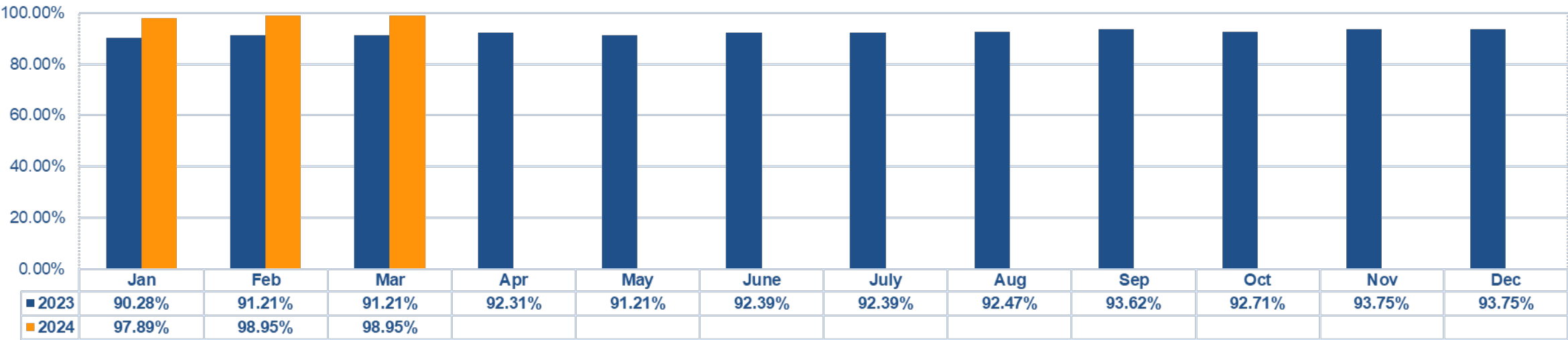


■ PASSED
■ FAILED



- 89 out of 95 facilities being monitored performed within the PERC95 standards, while 6 failed.
- 47 out of 53 Solar Power Plants, 7 out of 7 Wind Power Plants, and 35 out of 35 Run of River Power Plants passed the PERC95 standards.

PERC95 PASSING RATE AS OF MARCH 2024 (OVERALL)



Total MDGUs Monitored

2023	72	91	91	91	91	92	92	93	94	96	96	96
2024	95	95	95									

Total Facilities Passed the PERC95

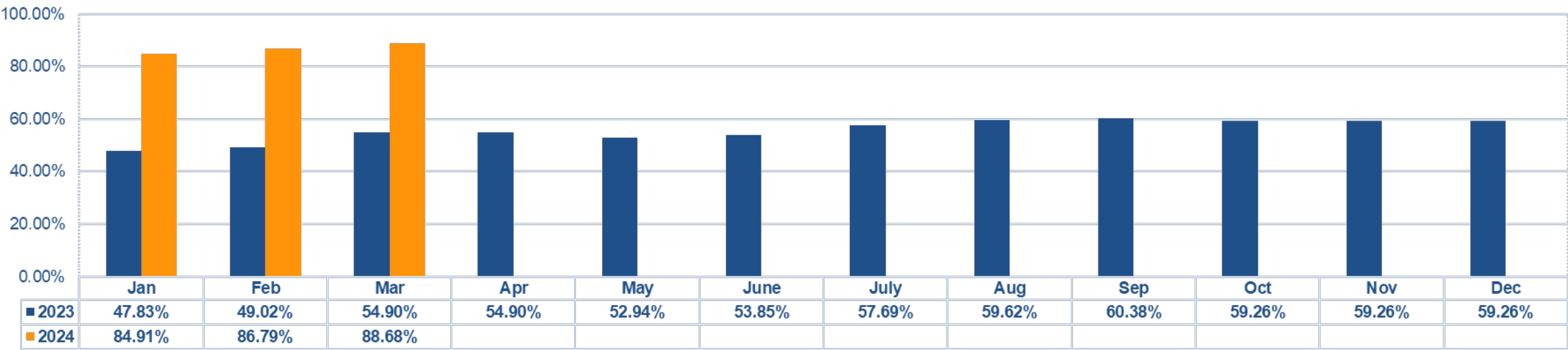
2023	45	61	63	64	62	63	65	67	69	69	68	69
2024	86	88	89									

Total Facilities Failed the MAPE

2023	27	30	28	27	29	29	27	26	25	27	28	27
2024	9	7	6									

- The 2024 overall passing rate is continuously improving and observe to have better passing rates than 2023.

PERC95 PASSING RATE AS OF MARCH 2024 (SOLAR)



Total MDGUs Monitored

2023	46	51	51	51	51	52	52	52	53	54	54	54
2024	53	53	53									

Total Facilities Passed the PERC95

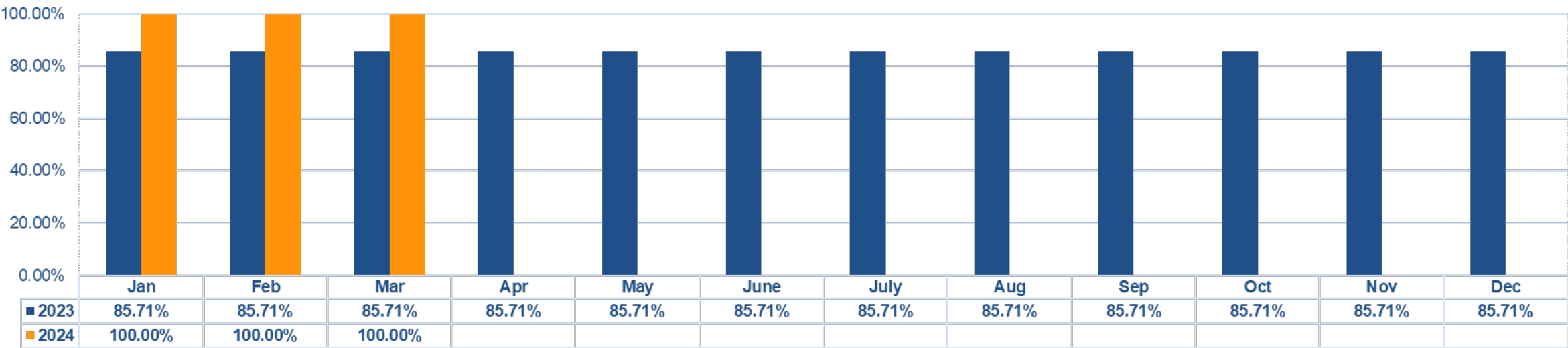
2023	22	25	28	28	27	28	30	31	32	32	32	32
2024	45	46	47									

Total Facilities Failed the MAPE

2023	24	26	23	23	24	24	22	21	21	22	22	22
2024	8	7	6									

- A significant improvement was observed for Solar facilities.

PERC95 PASSING RATE AS OF MARCH 2024 (WIND)



Total MDGUs Monitored

2023	7	7	7	7	7	7	7	7	7	7	7	7
2024	7	7	7									

Total Facilities Passed the PERC95

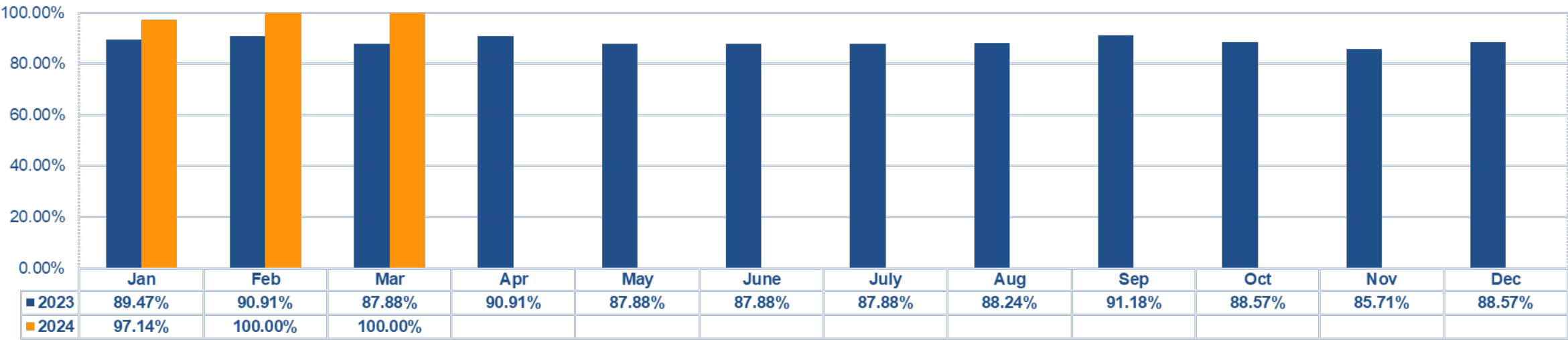
2023	6	6	6	6	6	6	6	6	6	6	6	6
2024	7	7	7									

Total Facilities Failed the MAPE

2023	1	1	1	1	1	1	1	1	1	1	1	1
2024	0	0	0									

- Similar to MAPE performance, the Wind facilities showed a perfect performance in PERC95.

PERC95 PASSING RATE AS OF MARCH 2024 (RUN-OF-RIVER)



Total MDGUs Monitored

2023	19	33	33	33	33	33	33	34	34	35	35	35
2024	35	35	35									

Total Facilities Passed the PERC95

2023	17	30	29	30	29	29	29	30	31	31	30	31
2024	34	35	35									

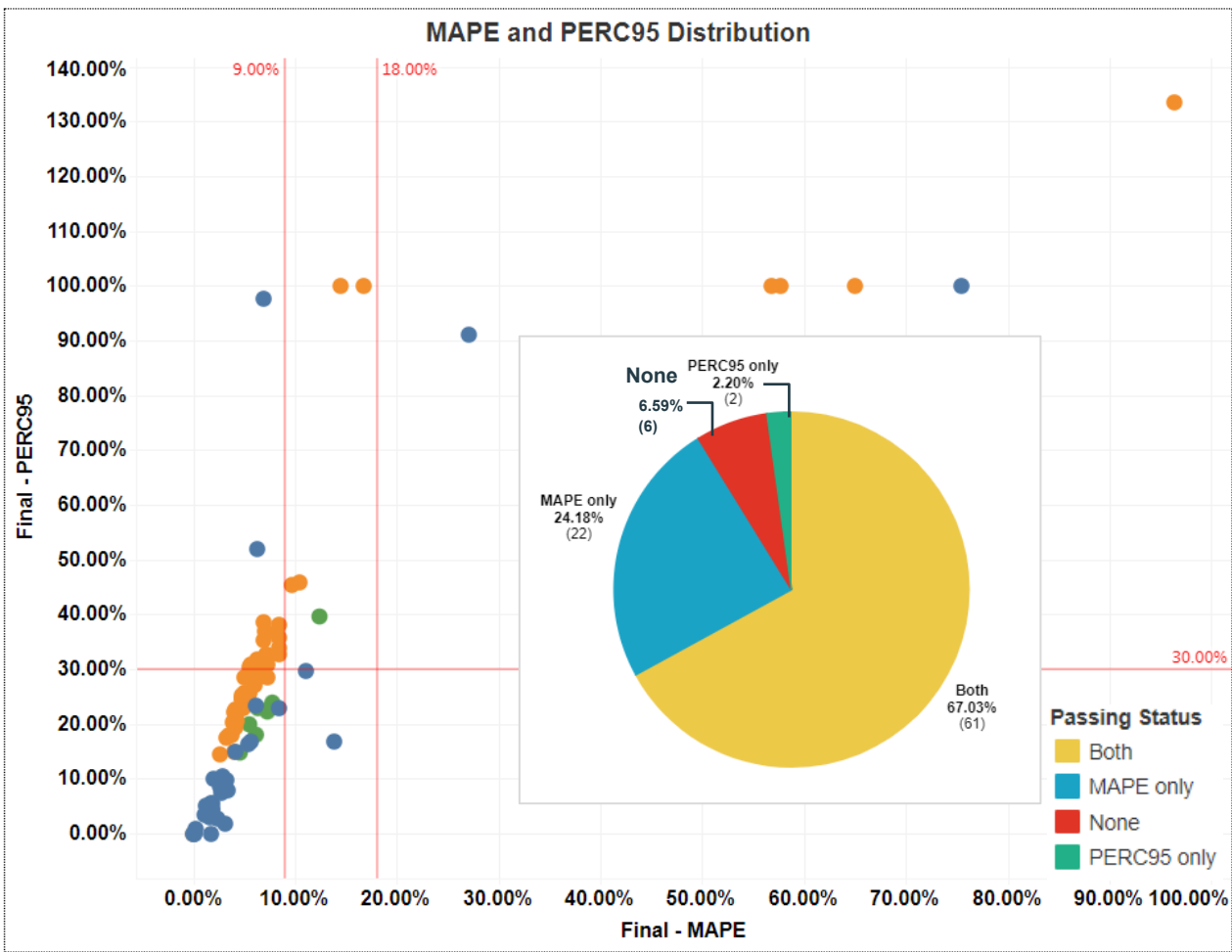
Total Facilities Failed the MAPE

2023	2	3	4	3	4	4	4	4	3	4	5	4
2024	1	0	0									

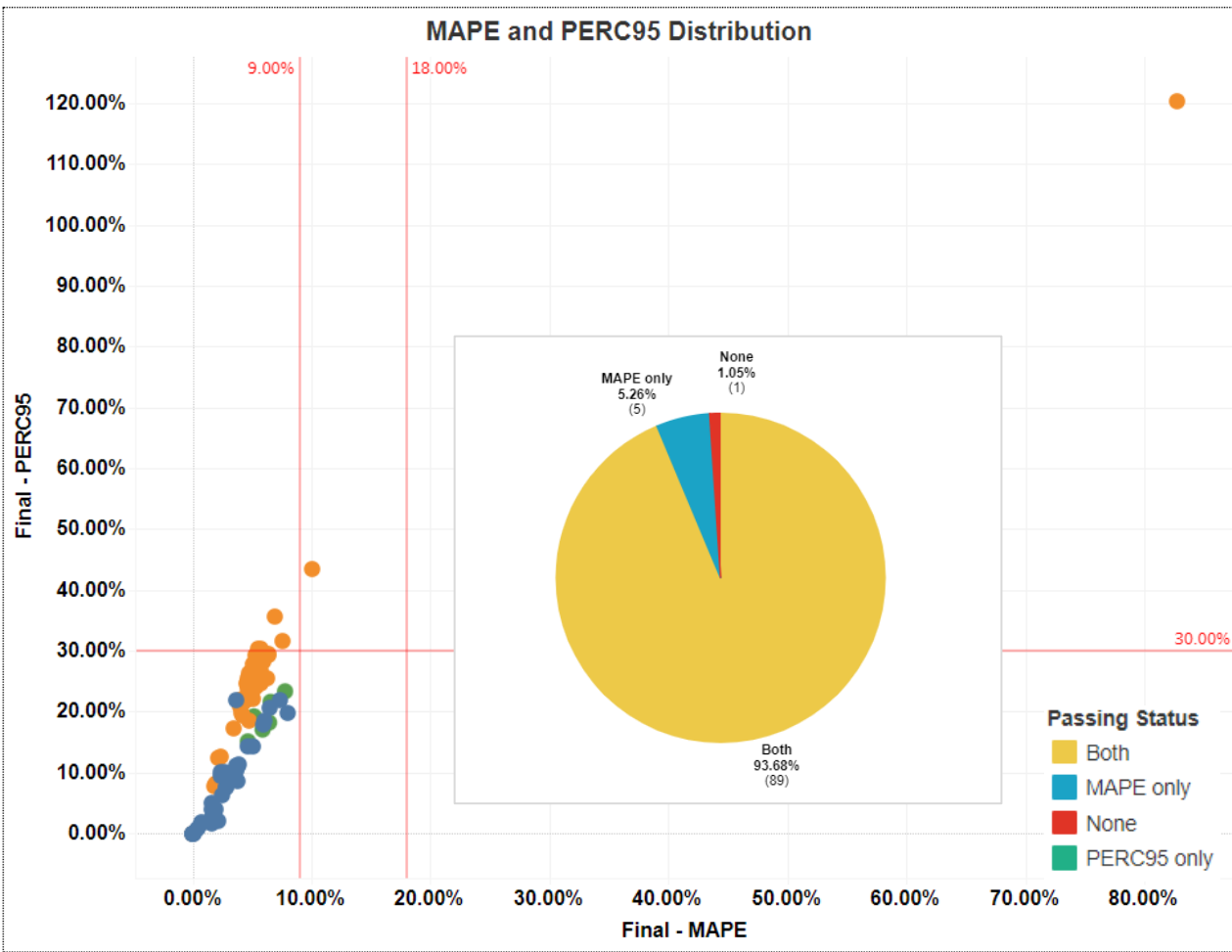
- The Run-of-River facilities showed a perfect score in March 2024.

MAPE AND PERC95 DISTRIBUTIONS

MARCH 2023



MARCH 2024



- The March 2024 distribution is concentrated within the standards.

UPDATE ON THE FACILITIES THAT RECEIVED NOTICE FROM ECO

- The ECO issued a letter containing Remedial Measures to Address Non-Submission of Nomination in Forecast Accuracy Standards on 24 April 2024 to thirteen MDGUs with observed high Forecast Percentage Errors.

RESOURCE ID	TP ACTION	MAPE	PERC95
01BTSOLEN_G01	No Reply	4.49%	22.14%
01BOSUNG_G01	No Reply	82.75%	120.25%
02ECOPRK_G01	No Reply	4.84%	25.33%
02ECOTAGA_G01	No Reply	5.75%	30.41%
01PASQSOL_G01	Acknowledged receipt	2.13%	12.34%
01CABSOL_G01	No Reply	10.09%	43.34%
01SUBSOL_G01	Submitted Letter Explanation	3.41%	17.23%
01PETSOL_G01	Submitted Letter Explanation	4.69%	25.57%
01PETSOL_G02	Submitted Letter Explanation	5.05%	27.80%
03CALSOL_G01	No Reply	5.46%	25.61%
01ZAMSOL_G01	No Reply	6.03%	29.06%
01BTNSOL_G01	No Reply	5.56%	27.86%
01SPABUL_G01	No Reply	6.31%	25.50%

REQUESTED ACTION

FOR INFORMATION

Connect with **PEMC**



pemc.info@wesm.ph



+63 2 8631 8734



18F Robinsons Equitable Tower, ADB Avenue
Ortigas Center, Pasig City 1600, Philippines



pemcinfo



pemcinfo



PEMC_Info



PEMC Info